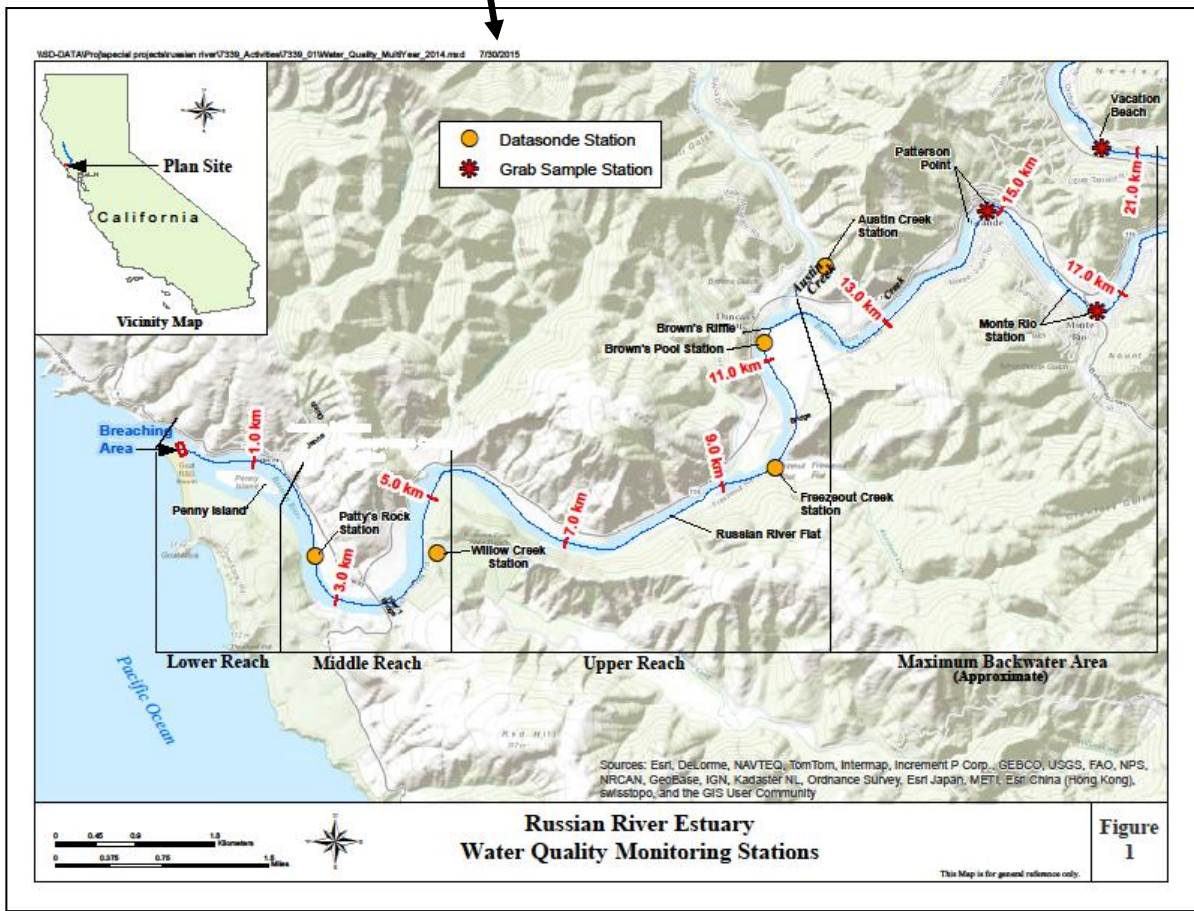
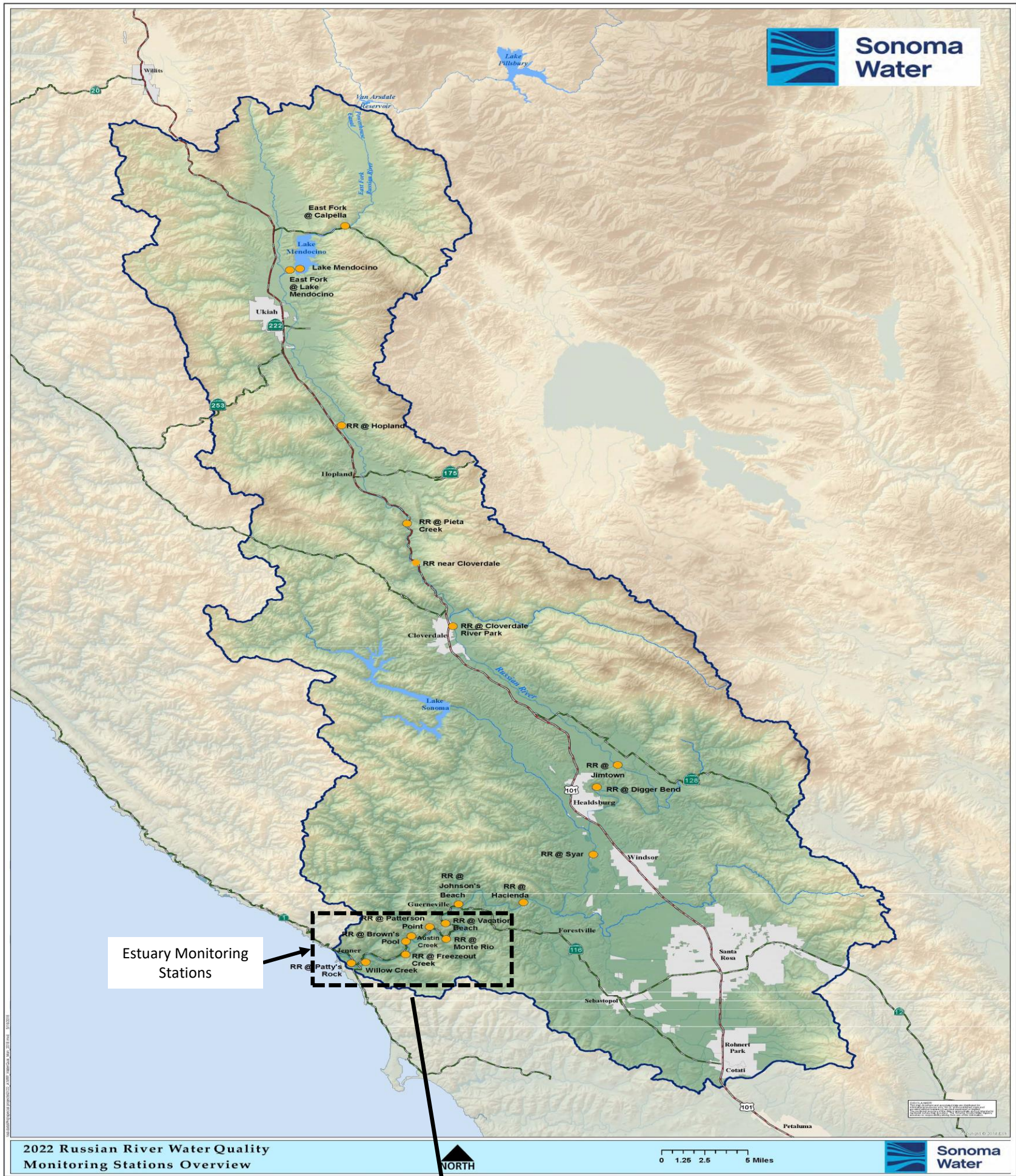




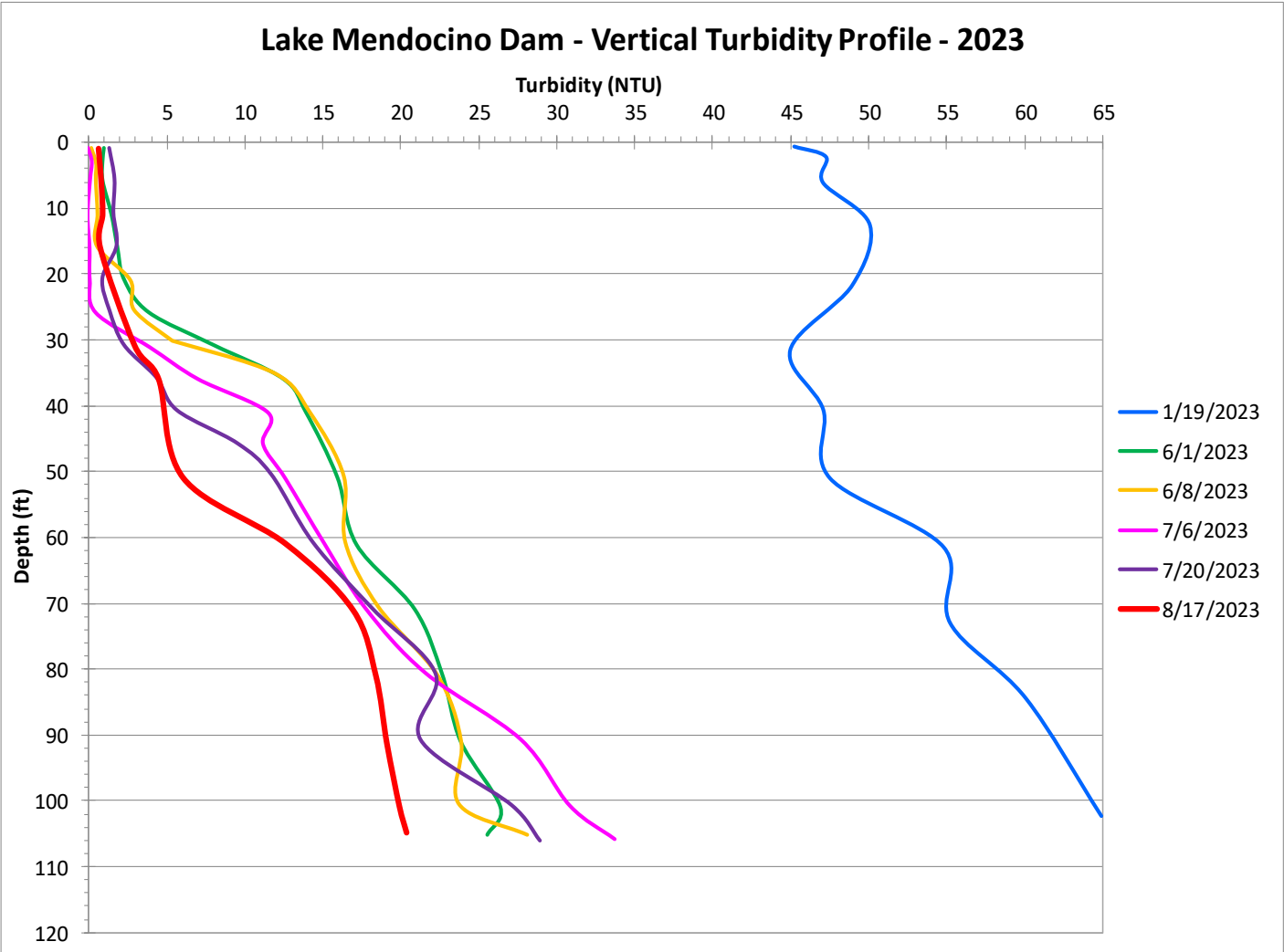
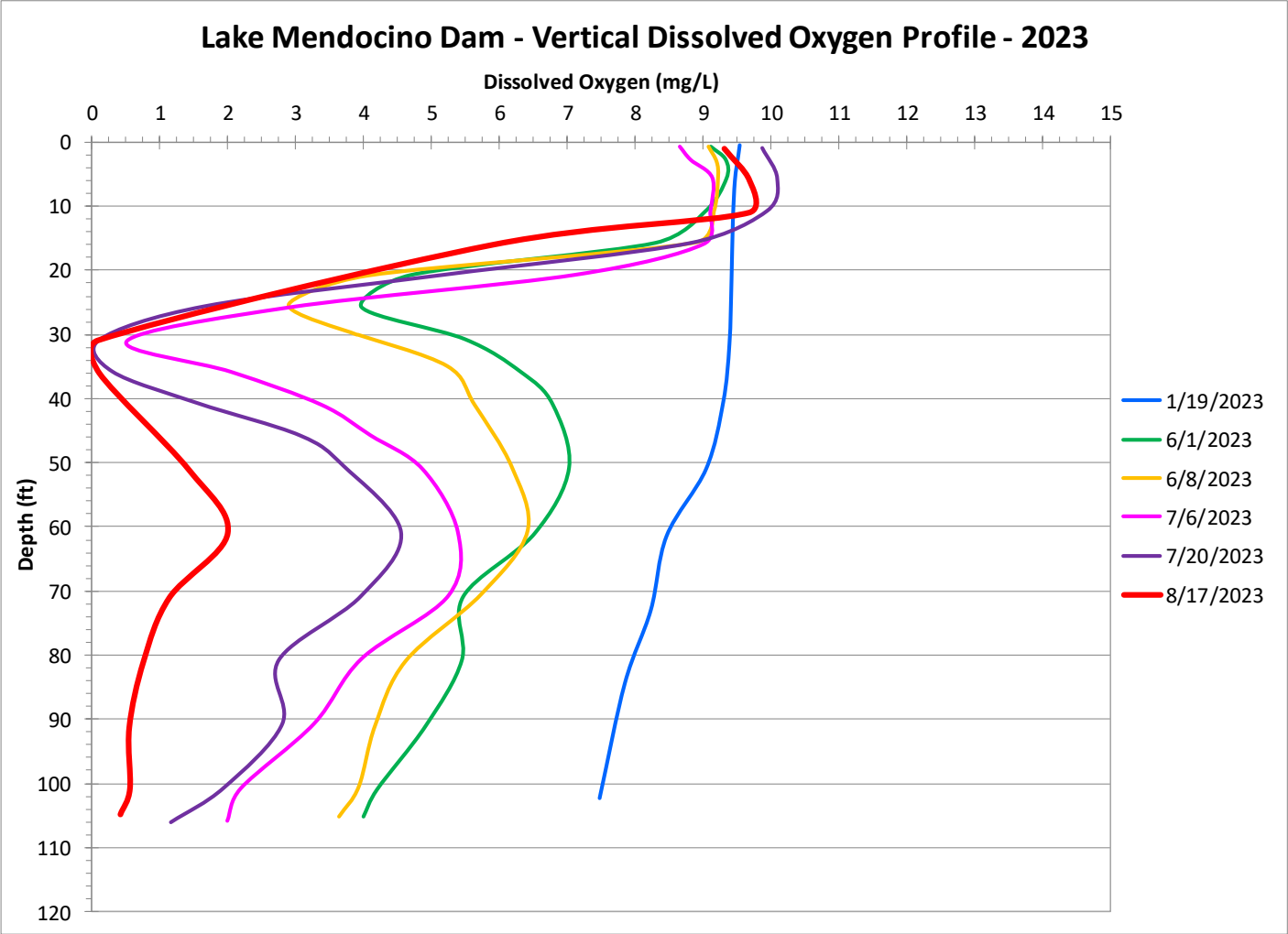
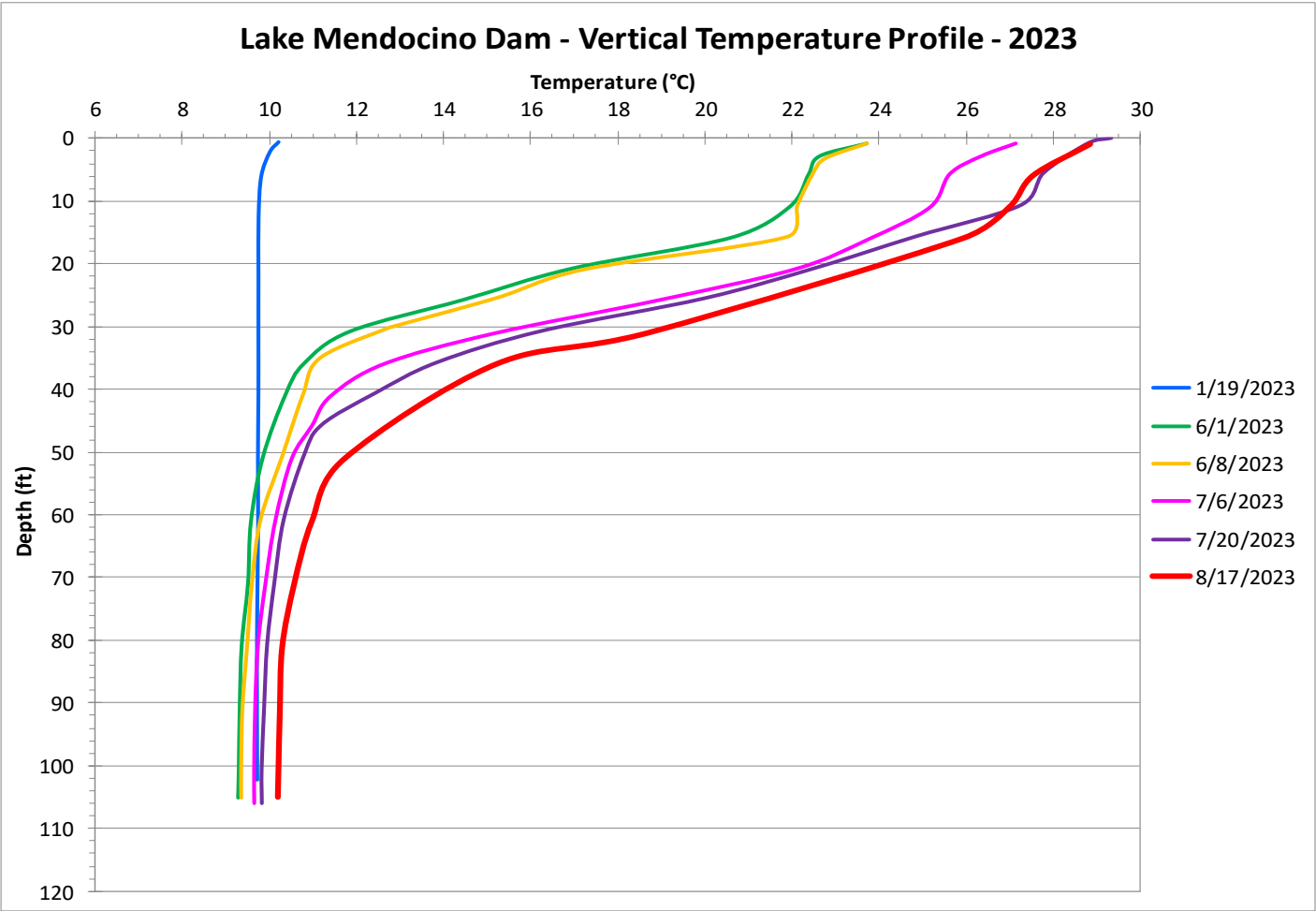
Sonoma
Water

State Water Resources Control Board
Temporary Urgency Change Order (5/19/2023)
Russian River Water Quality Report
August 11 – August 17, 2023



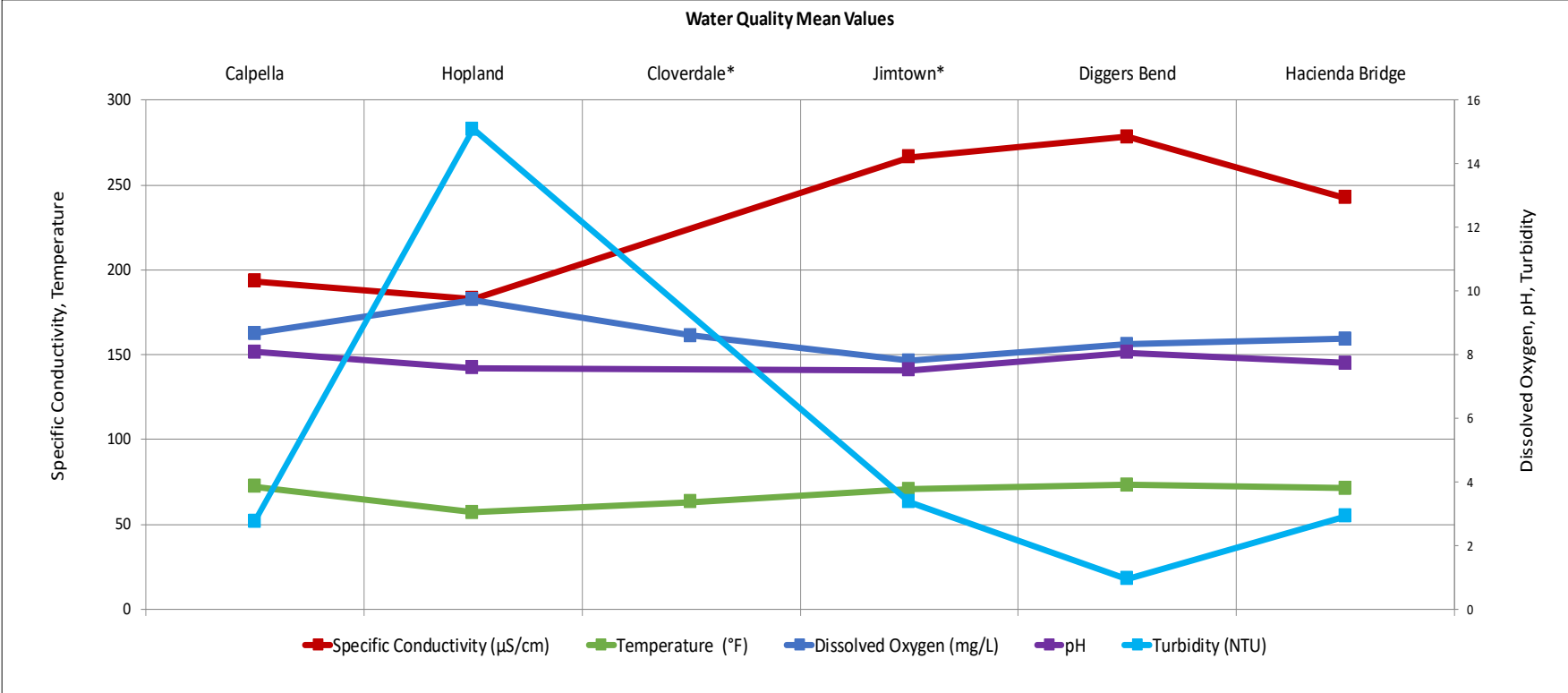
Lake Mendocino Water Quality Vertical Profiles (January 19 – August 17, 2023)

Provisional Data Subject to Revision



Russian River Water Quality Sondes (August 11 – August 17, 2023)									
Provisional Data Subject to Revision									
Parameter		Calpella	Hopland	Cloverdale*	Jimtown*	Diggers Bend	River Diversion System at Mirabel*	Hacienda Bridge	Johnsons Beach*
		USGS 11461500	USGS 11462500	USGS 11463000	USGS 11463682	USGS 11463980	SCWA	USGS 11467000	SCWA
Temperature (°F)	Min	68.9	54.3	60.4	66.9	69.4		68.2	
	Max	75.9	59.4	66.9	74.8	77.4		74.7	
	Mean	72.2	57.0	63.1	70.6	73.2		71.2	
Specific Conductivity (µS/cm)	Min	191.0	181.0		263.0	273.0		240.0	
	Max	196.0	184.0		275.0	286.0		249.0	
	Mean	193.3	183.0		266.5	278.4		242.6	
Dissolved Oxygen (mg/L)	Min	8.1	9.1	7.6	6.6	7.0		7.1	
	Max	9.4	10.5	10.2	9.6	9.5		9.6	
	Mean	8.7	9.7	8.6	7.8	8.3		8.5	
Dissolved Oxygen (% Saturation)	Min	95.2	88.3	78.0	73.2	79.8		79.4	
	Max	108.7	103.0	108.8	112.3	114.8		113.4	
	Mean	99.7	94.1	89.5	88.4	97.0		96.8	
pH	Min	8.0	7.5		7.4	7.7		7.5	
	Max	8.3	7.7		7.8	8.4		8.0	
	Mean	8.1	7.6		7.5	8.1		7.7	
Turbidity (NTU)	Min	1.8	13.7		2.7	0.5		2.1	
	Max	4.3	18.3		7.2	1.6		4.2	
	Mean	2.8	15.1		3.4	0.9		2.9	

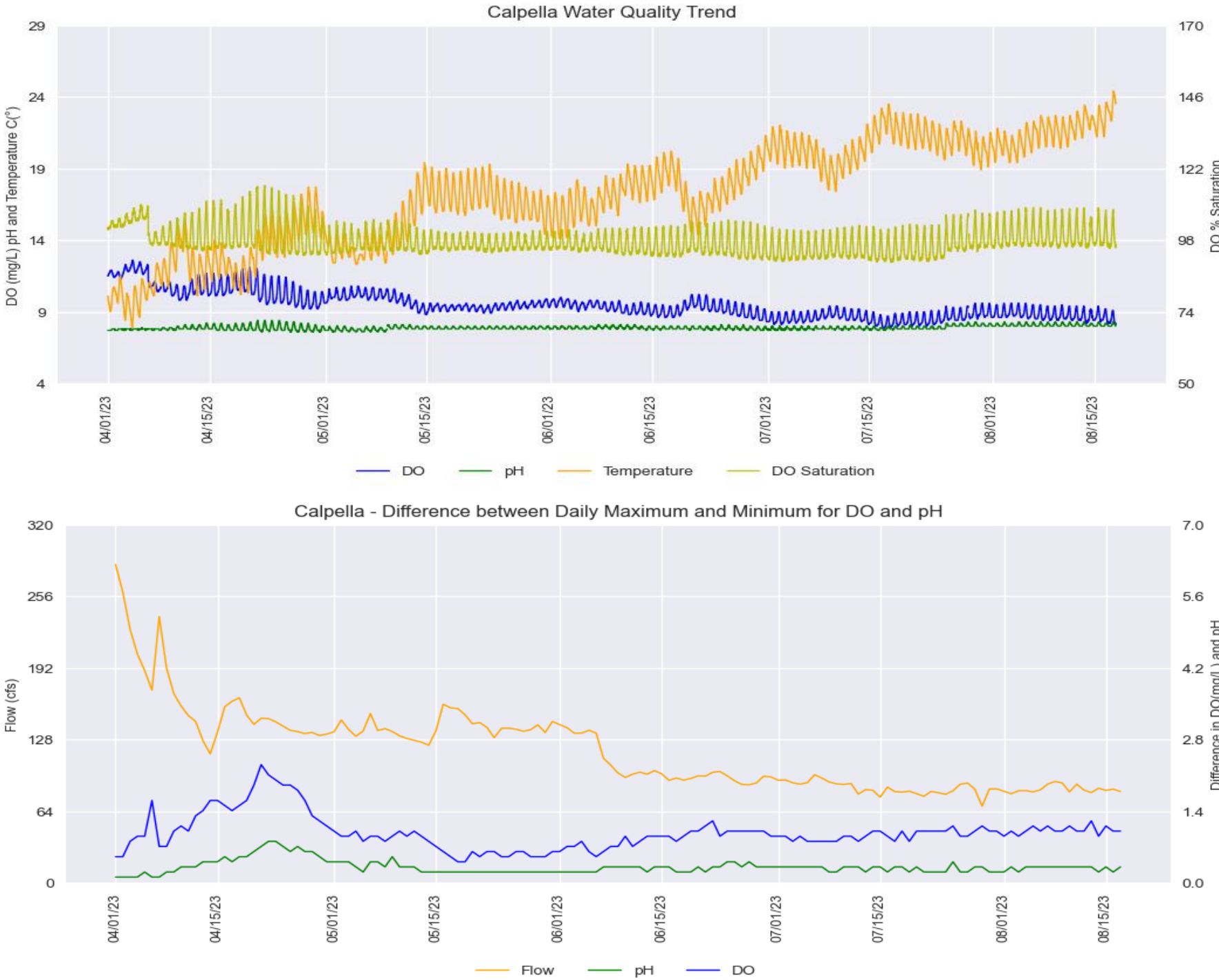
*Station operated seasonally



Russian River Water Quality April 1 – August 17, 2023

Provisional Data Subject to Revision

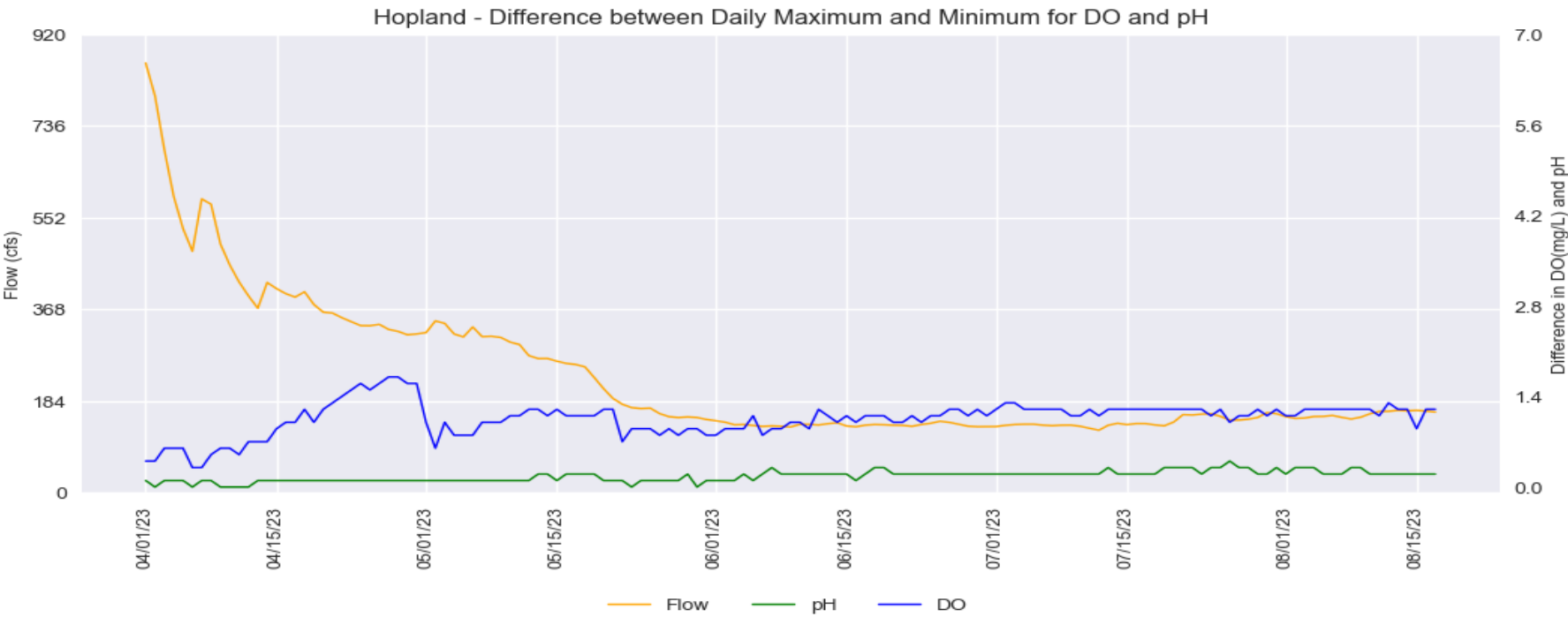
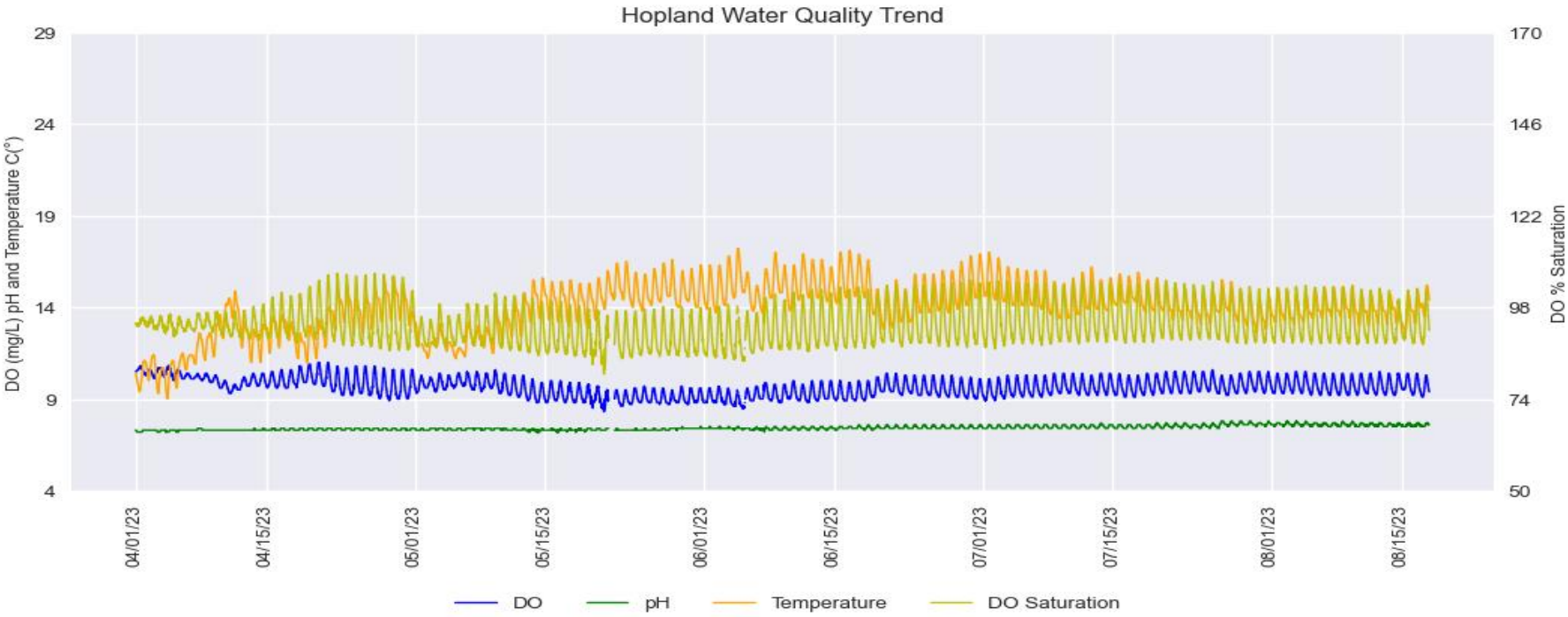
Calpella (East Fork Russian River)



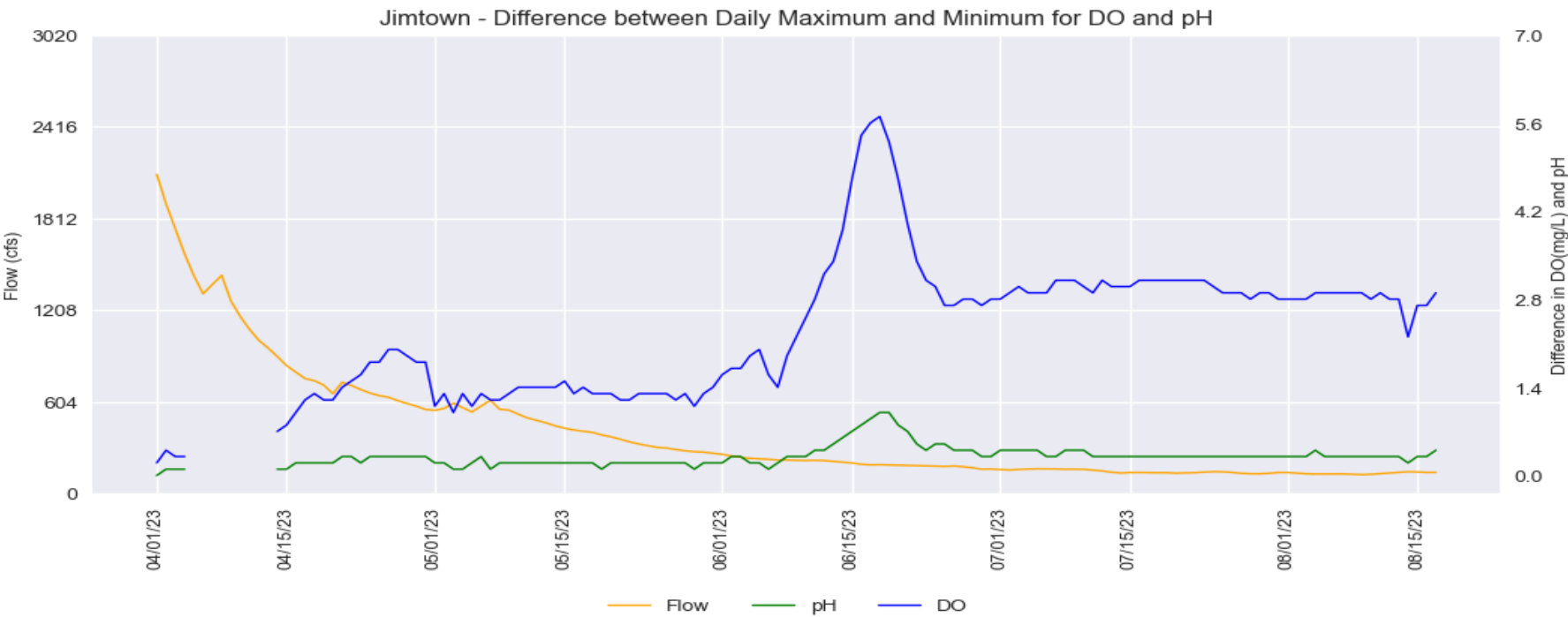
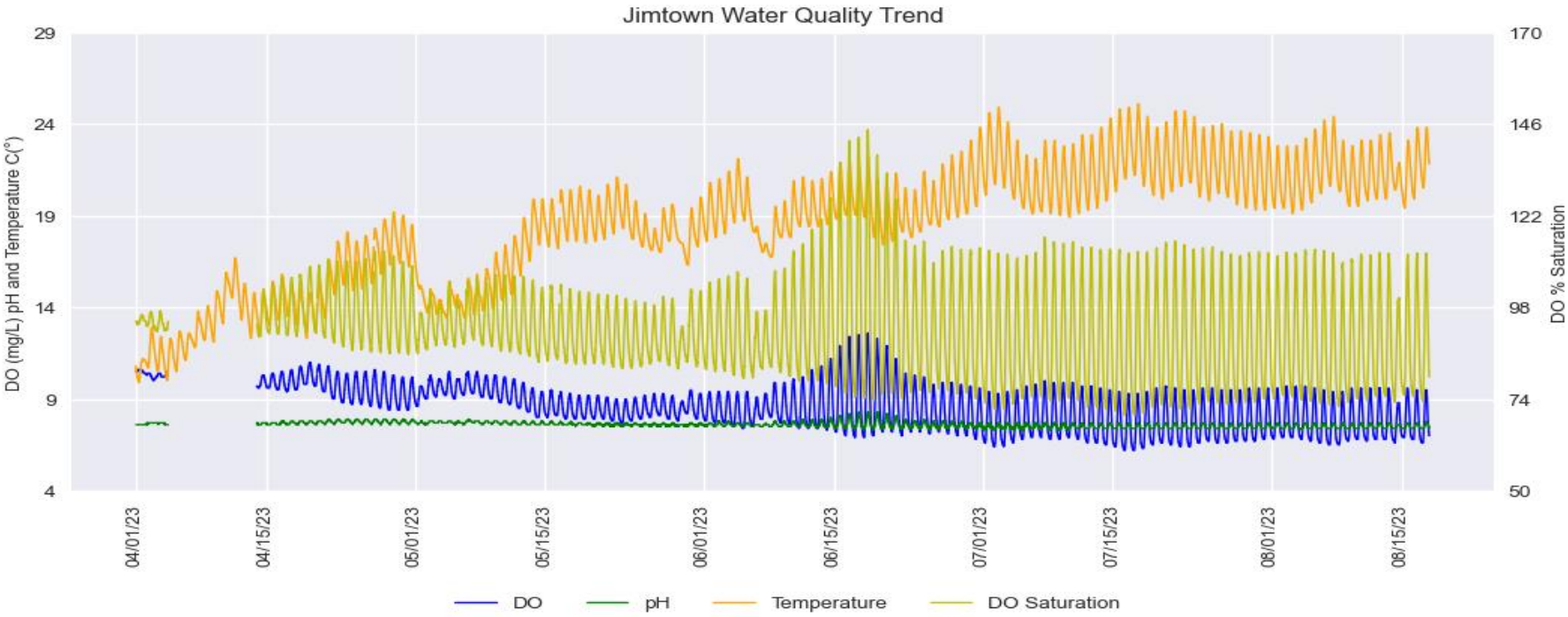
Russian River Water Quality April 1 – August 17, 2023

Provisional Data Subject to Revision

Hopland



Jimtown

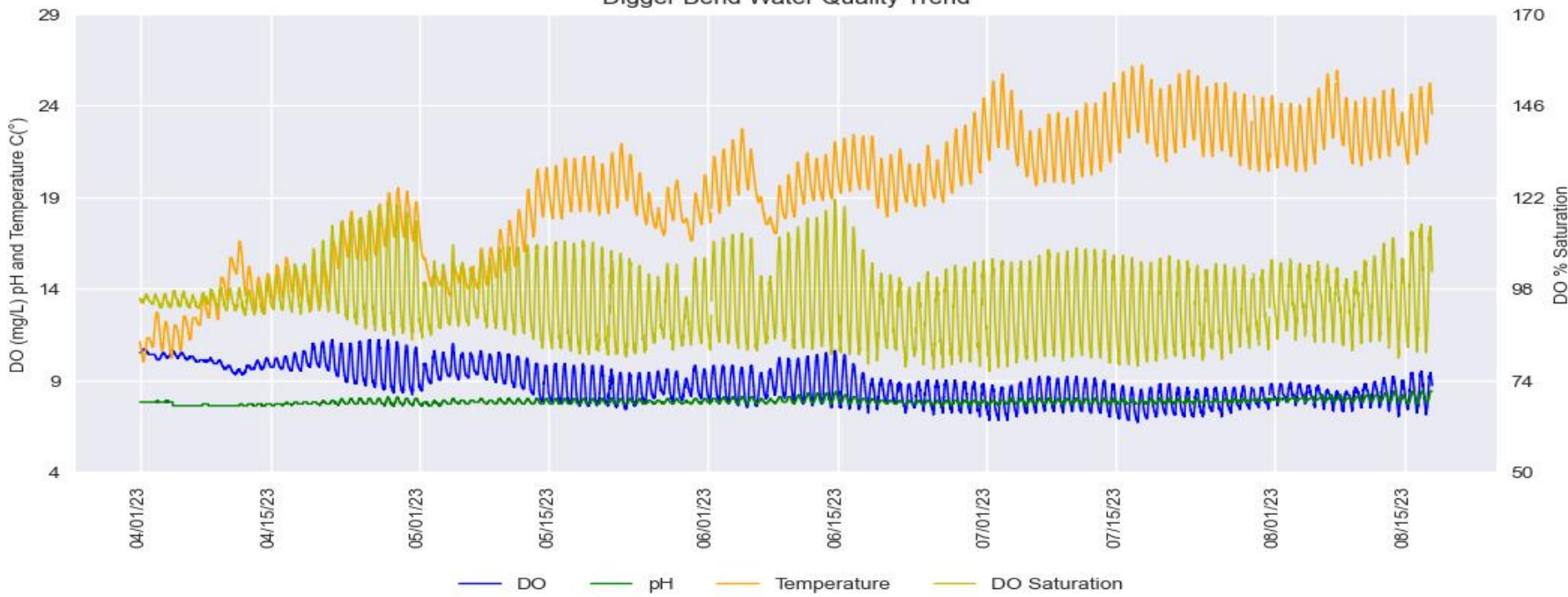


Russian River Water Quality April 1 – August 17, 2023

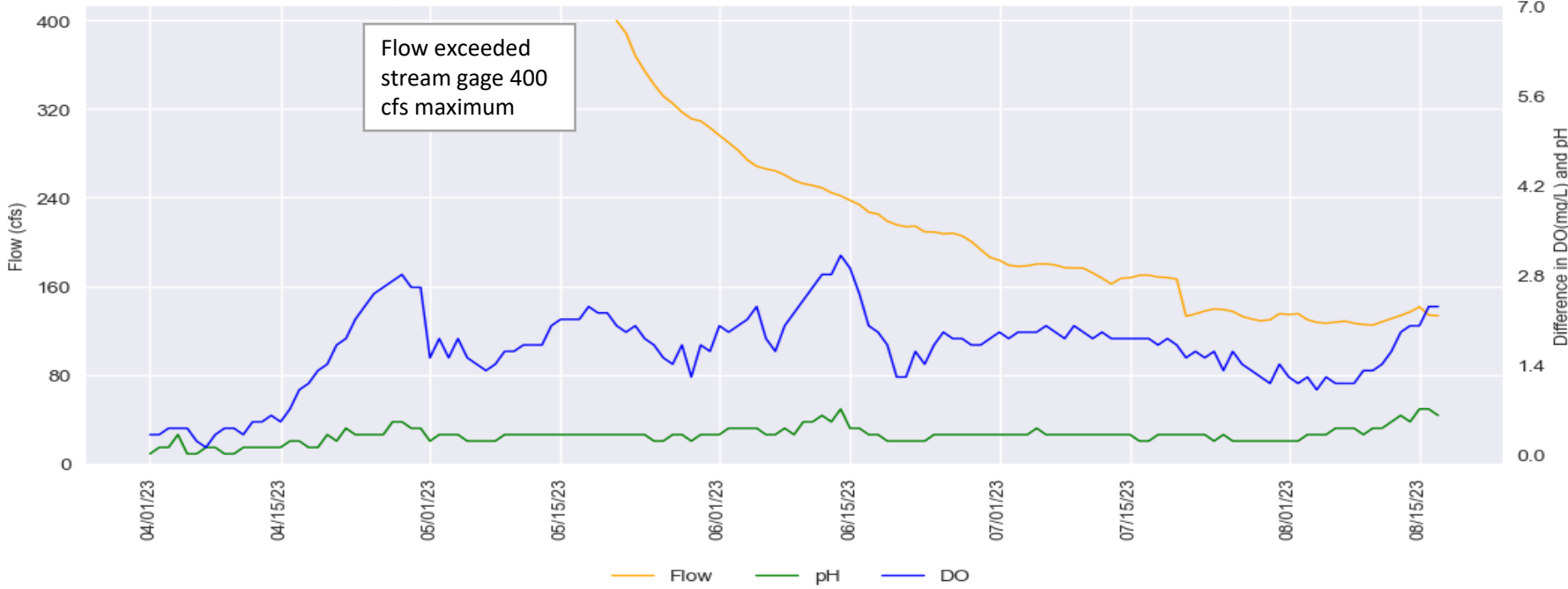
Provisional Data Subject to Revision

Diggers Bend

Digger Bend Water Quality Trend

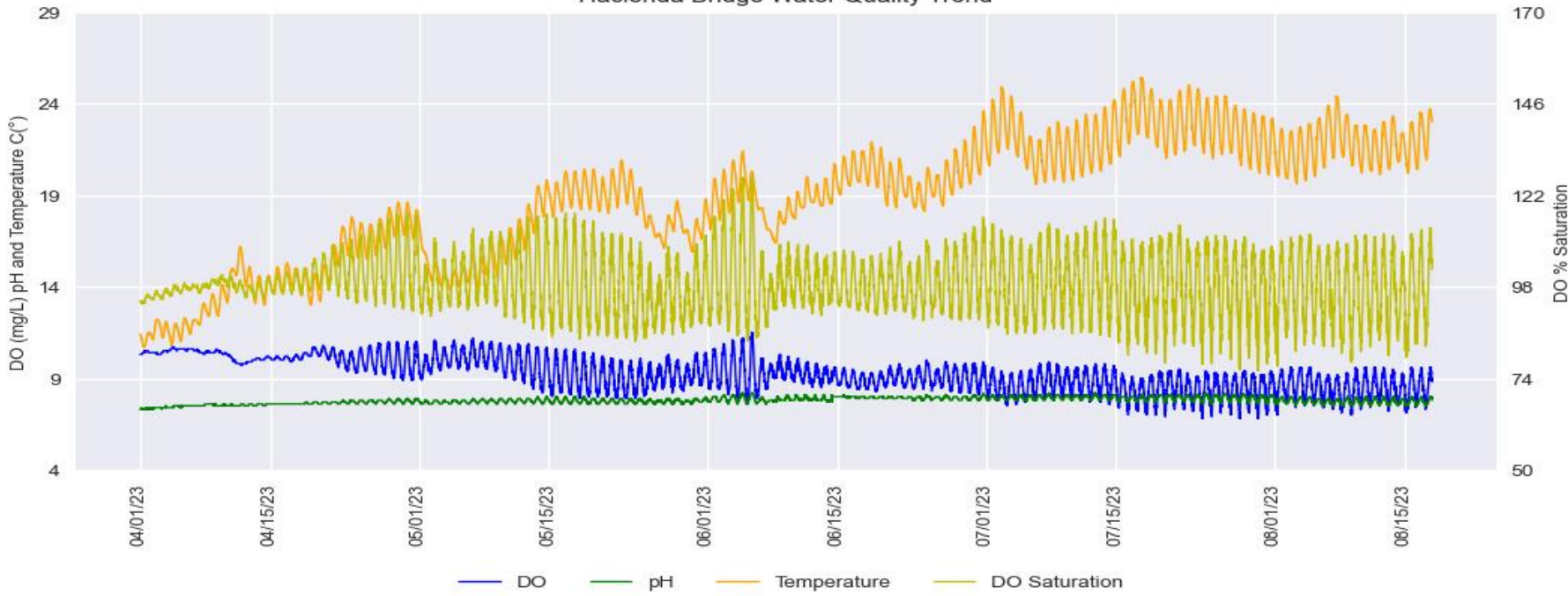


Digger Bend - Difference between Daily Maximum and Minimum for DO and pH



Hacienda Bridge

Hacienda Bridge Water Quality Trend



Hacienda Bridge - Difference between Daily Maximum and Minimum for DO and pH

